

ASAHI

STAINLESS STEEL INSERT BEARINGS

MB SERIES NEWLY ADDED



JP-1973

ISO 9002
JQA-1973

High anti corrosive, excellent for harsh corrosive environments.

Filled with FD-grease, ideal for food machinery.

Regreasable and with a locking pin on O.D.

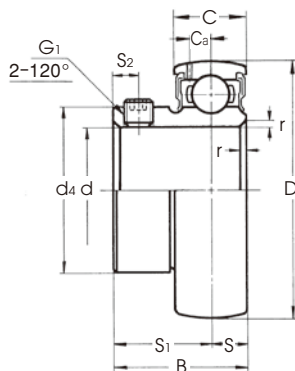
Designed to be mounted in thermoplastic housing as regreasable bearing unit.

Inner ring flush with outer ring on one side enables back seal to be fitted to flange type thermoplastic housings.



ASAHI SEIKO CO., LTD.

● MAIN DIMENSIONS MB type Set-screw Locking



Shaft dia. (mm)	Bearing No.	Dimensions (mm)											Basic load rating (kN)		Weight (kg)
		d	D	B	C	r	S	S ₁	S ₂	G ₁	C _a	d ₄	C _r	C _{or}	
20	MB4BGA-FD	20	47	24.7	14	1.5	7	17.7	4.5	M5×0.8	4.1	29	10.9	5.3	0.12
25	MB5BGA-FD	25	52	27	15	1.5	7.5	19.5	5	M6×0.75	4.1	34	11.9	6.3	0.16
30	MB6BGA-FD	30	62	30.3	16	1.5	8	22.3	5	M6×0.75	4.9	40.5	16.7	9	0.25
35	MB7BGA-FD	35	72	32.9	17	2	8.5	24.4	6	M8×1	5.4	48	22	12.3	0.38
40	MB8BGA-FD	40	80	35.5	18	2	9	26.5	8	M8×1	5.9	53	24.9	14.3	0.49

● TOLERANCES

Tolerances on inner rings

(Unit : μm)

Nominal bore diameter d (mm)		Deviation of mean bore diameter in plane of inner ring Δdmp		Variance of bore diameter in plane of inner ring Vdp	Deviation of inner ring width ΔBs (reference)		Kia (reference)	Eccentricity deviation of inner ring and eccentric locking collar ΔHs
Over	Incl.	High	Low	Max.	High	Low	Max.	
10	18	+15	0	10	0	-120	15	±100
18	31.75	+18	0	12	0	-120	18	
31.75	50.8	+21	0	14	0	-120	20	

Tolerances on outer rings

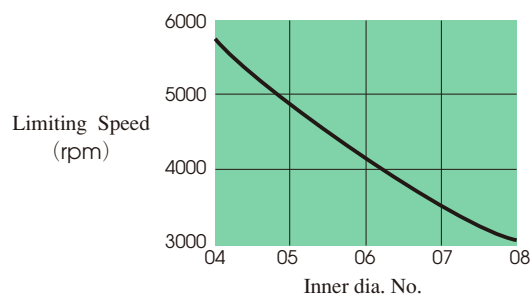
(Unit : μm)

Nominal outside diameter D (mm)		Deviation of mean outside diameter ΔDm		Radial runout of outer ring Kea (reference)
Over	Incl.	High	Low	Max.
30	50	0	-11	20
50	80	0	-13	25

● RANGE OF OPERATING TEMPERATURE

-15 ~ +100°C

● LIMITING SPEED



● MATERIALS

Parts	Materials	(JIS) Japanese Ind. Standard	
		Symbol	Code
Bearing	Stainless steel	SUS440C	—
		—	G4303
		SUS304	G4303
	Rubber seals	Nitril	—

Remark : Only in case of size no.4 of MB series bearing inserts, bearing's re-lubrication hole does not well match to housing's re-lube hole, so it not suitable for re-lubrication.

ASAHI SEIKO CO., LTD.

FOREIGN TRADE DEPARTMENT : 570-1, Otori-Higashi-machi 6-cho, Sakai City, Osaka 593-8324, Japan

Tel : (0722)72-6900

Fax : (0722)72-6903

e-mail address : ex-1@asahiseiko.co.jp (North America, East Asia & Oceania Section)

e-mail address : ex-2@asahiseiko.co.jp (Europe, Africa, Southeast Asia & Middle East Section)

e-mail address : ex-3@asahiseiko.co.jp