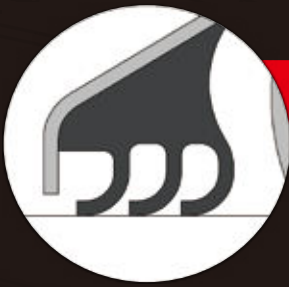


ASAHI

Cat. No.BE15



JQA-1973
JQA-EM4783



New Triple-lip design

Stainless steel backing plate!!



Insert Ball Bearing Units with Triple-Lip Seals

ASAHI SEIKO CO., LTD.

Insert Ball Bearing Units with Triple-Lip Seals

Excellent **dustproof** and **moisture proof** efficiencies

Realizing **Compact machine design** and **Longer life**

1 Excellent dustproof and moisture proof efficiencies

By improving design of triple-lip seal, longer life is realized; more than 2 times than the previous triple-lip seal, and more than 5 times than the standard seal

Sealing efficiency to powder dust



Operating length **1,450h** (Locked)
 <<< Operating length **3,000h** (Stopped as planned)
※ by our own test method

Sealing efficiency to muddy water



	Operating length until stopped
Standard type	335h (large vibration)
With new triple-lip seals	2,220h (large vibration)

※ by our own test method
 ※ The test was done with no relubrication, so longer life is expected by regular relubrication

2 Seal backing metal is made of **Stainless Steel**

All Stainless Steel bearing insert is available by adopting the new triple-lip seal

3 Reducing maintenance cost

Longer life reduces maintenance cost and improve operating ratio

4 Making machine design compact

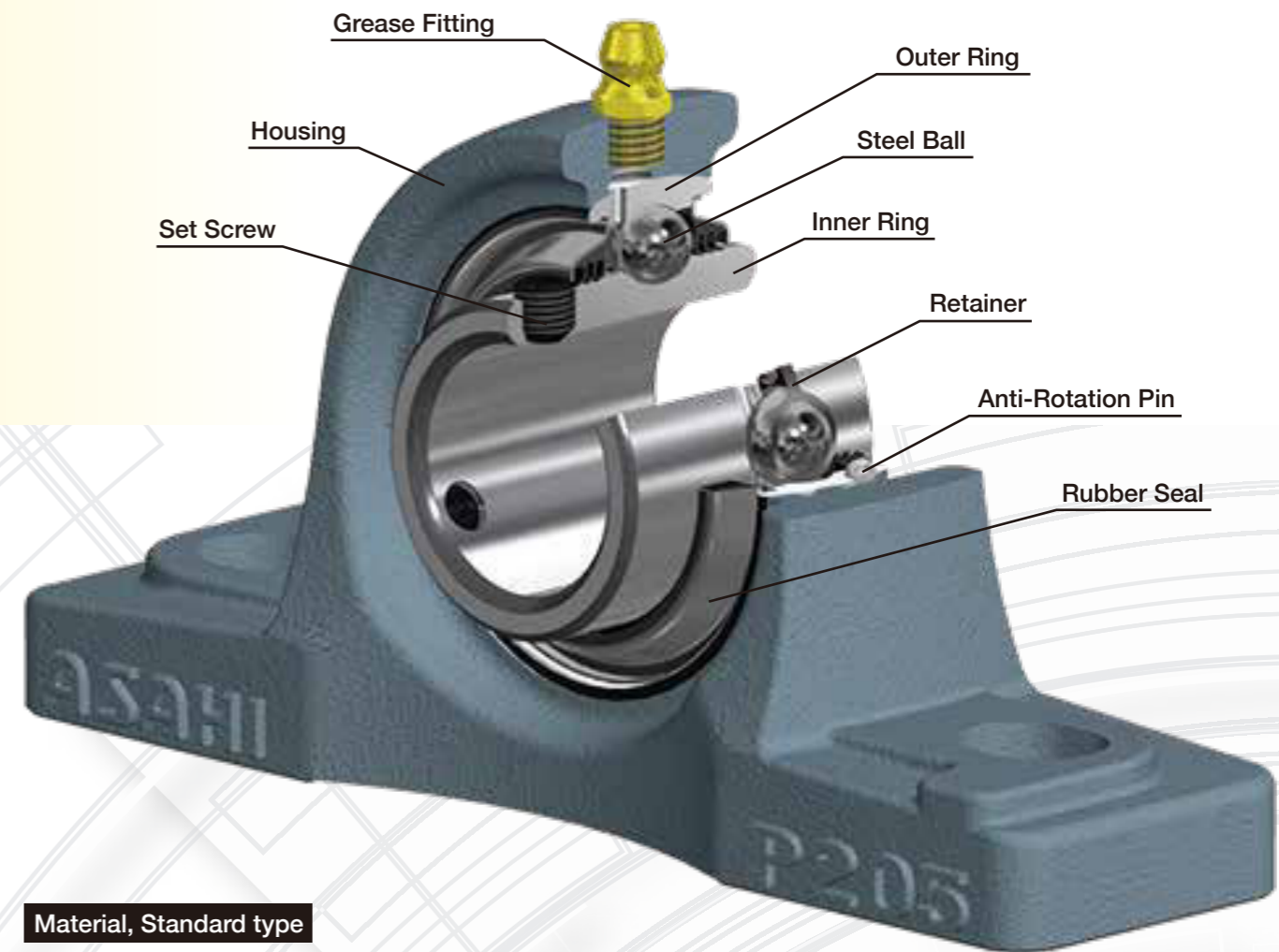
The new triple-lip seal makes cover type units replaceable depending on operating condition

5 Replaceable from standard units



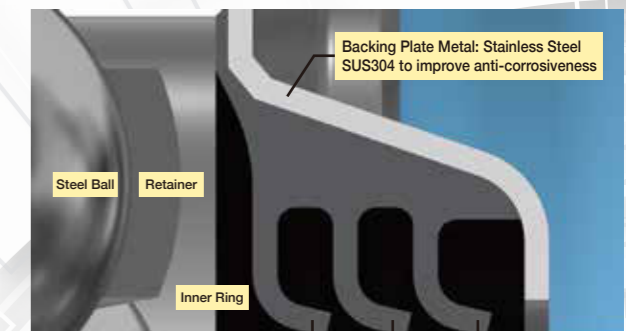
Special Specifications

Seal-backing metal is made of stainless steel, so all stainless bearing insert is available as MUC200V-RT by incorporating the new triple-lip seals and filling food-grade grease. Also other combinations than with UC200 set-screw locking type are possible such as with UK200 adapter locking type or with UG200 eccentric collar locking type. Please contact **ASAHI** for details.



Material, Standard type

Component Parts	Material	
Insert Bearing	Inner/Outer Ring	High Carbon Chrome Bearing Steel - SUJ
	Steel Ball	High Carbon Chrome Bearing Steel - SUJ
	Retainer	Cold Rolled Steel Plate - SPCC
	Rubber Seal	Nitril Rubber - NBR
	Seal Backing Metal	Stainless Steel - SUS304
	Anti-Rotation Pin	High Carbon Chrome Bearing Steel - SUJ
	Grease	Alvania Grease S3
Housing	Grey Cast Iron - FC200	
Grease Fitting	Copper alloy	



Backing Plate Metal: Stainless Steel SUS304 to improve anti-corrosiveness
 Triple-lip design: Excellent dustproof and moisture proof efficiencies

※ For size No.201 thru 204 (shaft size 12 mm thru 20 mm), only double-lip seals are available.

Operating Temperature Range

Recommendable operating temperature range is normal to +100°C

Limiting Speed

"Limiting Speed : Limiting dn value 30,000
 d: I.D.(mm), n: RPM (r/min)
 UC201RD thru UC204RD - Allowable Rotation Speed : 2,500r/min

Relubrication

Bearings are pre-lubricated, so please relubricate basically same grease as the prelubricated one

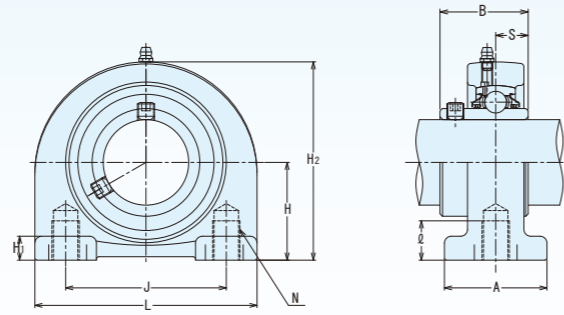
Application Examples

- Steel facilities
- Water and sewage processing equipments
- Garbage disposal equipments
- Agricultural machineries
- Food processing machineries

TAPPED BASE PILLOW BLOCK UNITS

Double-lip seal type
UCPA201~204RD

Triple-lip seal type
UCPA205~210RT

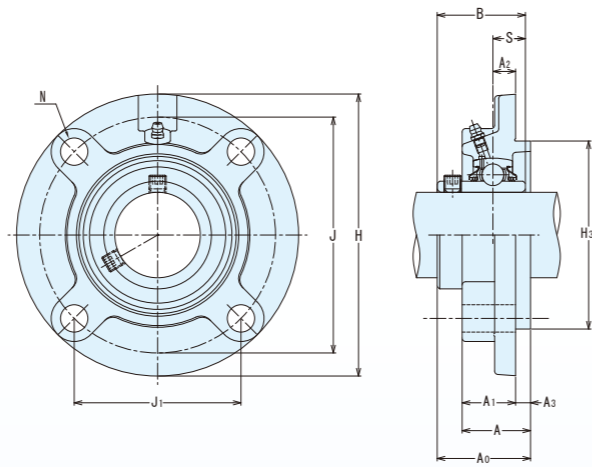


Shaft dia. (mm)	Unit No.	Dimensions(mm)										Insert Bearing		Housing No.	Weight (kg)	
		H	L	A	J	N	ℓ	H ₁	H ₂	B	S	Bearing No.	Basic Load Rating(kN) Cr Cor			
12	UCPA201RD	30.2	76	38	52	M10×1.5	12	8	62	31	12.7	UC201RD	12.8	6.6	PA204	0.55
15	UCPA202RD	30.2	76	38	52	M10×1.5	12	8	62	31	12.7	UC202RD	12.8	6.6	PA204	0.53
17	UCPA203RD	30.2	76	38	52	M10×1.5	12	8	62	31	12.7	UC203RD	12.8	6.6	PA204	0.52
20	UCPA204RD	30.2	76	38	52	M10×1.5	12	8	62	31	12.7	UC204RD	12.8	6.6	PA204	0.50
25	UCPA205RT	36.5	84	38	56	M10×1.5	15	10	72	34.1	14.3	UC205RT	14	7.9	PA205	0.72
30	UCPA206RT	42.9	94	48	66	M14×2	18	10	84	38.1	15.9	UC206RT	19.6	11.3	PA206	1.02
35	UCPA207RT	47.6	110	48	80	M14×2	20	12	95	42.9	17.5	UC207RT	25.9	15.4	PA207	1.58
40	UCPA208RT	49.2	116	54	84	M14×2	20	12	100	49.2	19	UC208RT	29.3	17.9	PA208	1.84
45	UCPA209RT	54.2	120	54	90	M14×2	25	12	108	49.2	19	UC209RT	33	20.5	PA209	2.06
50	UCPA210RT	57.2	130	60	94	M16×2	25	14	116	51.6	19	UC210RT	35.5	23.2	PA210	2.44

FLANGE CARTRIDGE UNITS

Double-lip seal type
UCFC201~204RD

Triple-lip seal type
UCFC205~213RT

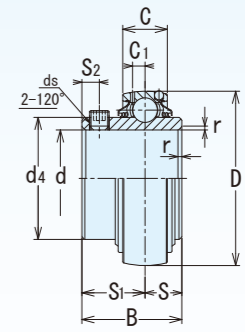


Shaft dia. (mm)	Unit No.	Dimensions(mm)										Bolt Size	Insert Bearing		Housing No.	Weight (kg)			
		H	A ₁	J	J ₁	N	A ₂	A ₃	A	H ₃	A ₀		B	S			Bearing No.	Basic Load Rating(kN) Cr Cor	
12	UCFC201RD	100	20.5	78	55.1	12	10	5	25.5	62	33.3	31	12.7	M10	UC201RD	12.8	6.6	FC204	0.89
15	UCFC202RD	100	20.5	78	55.1	12	10	5	25.5	62	33.3	31	12.7	M10	UC202RD	12.8	6.6	FC204	0.87
17	UCFC203RD	100	20.5	78	55.1	12	10	5	25.5	62	33.3	31	12.7	M10	UC203RD	12.8	6.6	FC204	0.86
20	UCFC204RD	100	20.5	78	55.1	12	10	5	25.5	62	33.3	31	12.7	M10	UC204RD	12.8	6.6	FC204	0.84
25	UCFC205RT	115	21	90	63.6	12	10	6	27	70	35.8	34.1	14.3	M10	UC205RT	14	7.9	FC205	0.97
30	UCFC206RT	125	23	100	70.7	12	10	8	31	80	40.2	38.1	15.9	M10	UC206RT	19.6	11.3	FC206	1.18
35	UCFC207RT	135	26	110	77.8	14	11	8	34	90	44.4	42.9	17.5	M12	UC207RT	25.9	15.4	FC207	1.55
40	UCFC208RT	145	26	120	84.8	14	11	10	36	100	51.2	49.2	19	M12	UC208RT	29.3	17.9	FC208	1.85
45	UCFC209RT	160	26	132	93.3	16	10	12	38	105	52.2	49.2	19	M14	UC209RT	33	20.5	FC209	2.42
50	UCFC210RT	165	28	138	97.6	16	10	12	40	110	54.6	51.6	19	M14	UC210RT	35.5	23.2	FC210	2.71
55	UCFC211RT	185	31	150	106.1	19	13	12	43	125	58.4	55.6	22.2	M16	UC211RT	43	29.4	FC211	3.9
60	UCFC212RT	195	36	160	113.1	19	17	12	48	135	68.7	65.1	25.4	M16	UC212RT	52.5	36.1	FC212	4.55
65	UCFC213RT	205	36	170	120.2	19	16	14	50	145	69.7	65.1	25.4	M16	UC213RT	57.5	40	FC213	5.11

INSERT BEARINGS Standard series

Double-lip seal type
UC201~204RD

Triple-lip seal type
UC205~213RT



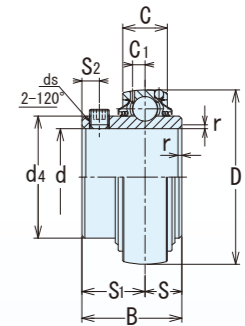
Shaft dia. (mm)	Unit No.	Dimensions(mm)										Insert Bearing		Weight (kg)	
		d	D	B	C	r _{s min}	S	S ₁	S ₂	ds	C ₁	d ₁	Basic Load Rating(kN) Cr Cor		
12	UC201RD	12	47	31	17	0.6	12.7	18.3	4.5	M6×0.75	4.5	29	12.8	6.6	0.21
15	UC202RD	15	47	31	17	0.6	12.7	18.3	4.5	M6×0.75	4.5	29	12.8	6.6	0.19
17	UC203RD	17	47	31	17	0.6	12.7	18.3	4.5	M6×0.75	4.5	29	12.8	6.6	0.18
20	UC204RD	20	47	31	17	1	12.7	18.3	4.5	M6×0.75	4.5	29	12.8	6.6	0.16
25	UC205RT	25	52	34.1	17	1	14.3	19.8	5	M6×0.75	4.5	34	14	7.9	0.19
30	UC206RT	30	62	38.1	19	1	15.9	22.2	5	M6×0.75	5.1	40.5	19.6	11.3	0.31
35	UC207RT	35	72	42.9	20	1.5	17.5	25.4	6	M8×1	5.8	48	25.9	15.4	0.48
40	UC208RT	40	80	49.2	21	1.5	19	30.2	8	M8×1	6.2	53	29.3	17.9	0.62
45	UC209RT	45	85	49.2	22	1.5	19	30.2	8	M8×1	6.5	57.3	33	20.5	0.67
50	UC210RT	50	90	51.6	23	1.5	19	32.6	9	M10×1.25	6.5	63	35.5	23.2	0.78
55	UC211RT	55	100	55.6	24	2	22.2	33.4	9	M10×1.25	7.3	70	43	29.4	1.03
60	UC212RT	60	110	65.1	26	2	25.4	39.7	10	M10×1.25	7.7	77	52.5	36.1	1.45
65	UC213RT	65	120	65.1	27	2	25.4	39.7	10	M10×1.25	8.3	82.1	57.5	40	1.71

INSERT BEARINGS All Stainless Steel

Food Grade Gease filled for Food Processing Machineries

Double-lip seal type
MUC201V~204V-RD

Triple-lip seal type
MUC205V~213V-RT



Shaft dia. (mm)	Unit No.	Dimensions(mm)										Insert Bearing		Weight (kg)	
		d	D	B	C	r _{s min}	S	S ₁	S ₂	ds	C ₁	d ₄	Basic Load Rating(kN) Cr Cor		
12	MUC201V-RD	12	47	31	17	0.6	12.7	18.3	5	M5×0.8	4.5	29	10.9	5.3	0.21
15	MUC202V-RD	15	47	31	17	0.6	12.7	18.3	5	M5×0.8	4.5	29	10.9	5.3	0.19
17	MUC203V-RD	17	47	31	17	0.6	12.7	18.3	5	M5×0.8	4.5	29	10.9	5.3	0.18
20	MUC204V-RD	20	47	31	17	1	12.7	18.3	5	M5×0.8	4.5	29	10.9	5.3	0.16
25	MUC205V-RT	25	52	34.1	17	1	14.3	19.8	5	M5×0.8	4.5	34	11.9	6.3	0.19
30	MUC206V-RT	30	62	38.1	19	1	15.9	22.2	5	M5×0.8	5.1	40.5	16.7	9.0	0.31
35	MUC207V-RT	35	72	42.9	20	1.5	17.5	25.4	7	M6×0.75	5.8	48	22.0	12.3	0.48
40	MUC208V-RT	40	80	49.2	21	1.5	19	30.2	8	M6×0.75	6.2	53	24.9	14.3	0.62
45	MUC209V-RT	45	85	49.2	22	1.5	19	30.2	8	M6×0.75	6.5	57.3	28.1	16.4	0.67
50	MUC210V-RT	50	90	51.6	23	1.5	19	32.6	9	M8×1	6.5	63	30.2	18.6	0.78
55	MUC211V-RT	55	100	55.6	24	2	22.2	33.4	9	M8×1	7.3	70	36.6	23.5	1.03
60	MUC212V-RT	60	110	65.1	26	2	25.4	39.7	10	M10×1.25	7.7	77	44.6	28.9	1.45
65	MUC213V-RT	65	120	65.1	27	2	25.4	39.7	10	M10×1.25	8.3	82.1	48.9	32	1.71

Note For a part of bearing sizes, set-screw position (S2) and its sizes (ds) are not same as those of standard UC200 standard series above. For stainless steel housings, please refer to catalog No.BE04-13, Stainless Steel bearing units.

ASAHI SEIKO CO., LTD.

<http://www.asahiseiko.co.jp>

FOREIGN TRADE DEPARTMENT : 570-1, Otori-Higashi-machi 6-cho, Nishi-ku, Sakai City, Osaka 593-8324, Japan

Tel : +81-72-272-6900

Fax : +81-72-272-6903

E-mail : info@asahiseiko.co.jp

U.S.A. OFFICE : 570 North Wheeling Road, Mount Prospect, Illinois 60056, U.S.A.

Tel : +1-847-759-0620

Fax : +1-847-759-0630

CHINA OFFICE : ROOM#101, Xuyuan Building, #5003, Longgang Road, Longgang District, Shenzhen City, Guangdong Province, 518116, China

Tel : +86-755-23605700 / 23902930

Fax : +86-755-83376159

HEAD OFFICE & FACTORY : 570-1, Otori-Higashi-machi 6-cho, Nishi-ku, Sakai City, Osaka 593-8324, Japan

Tel : +81-72-271-1221

Fax : +81-72-273-0058